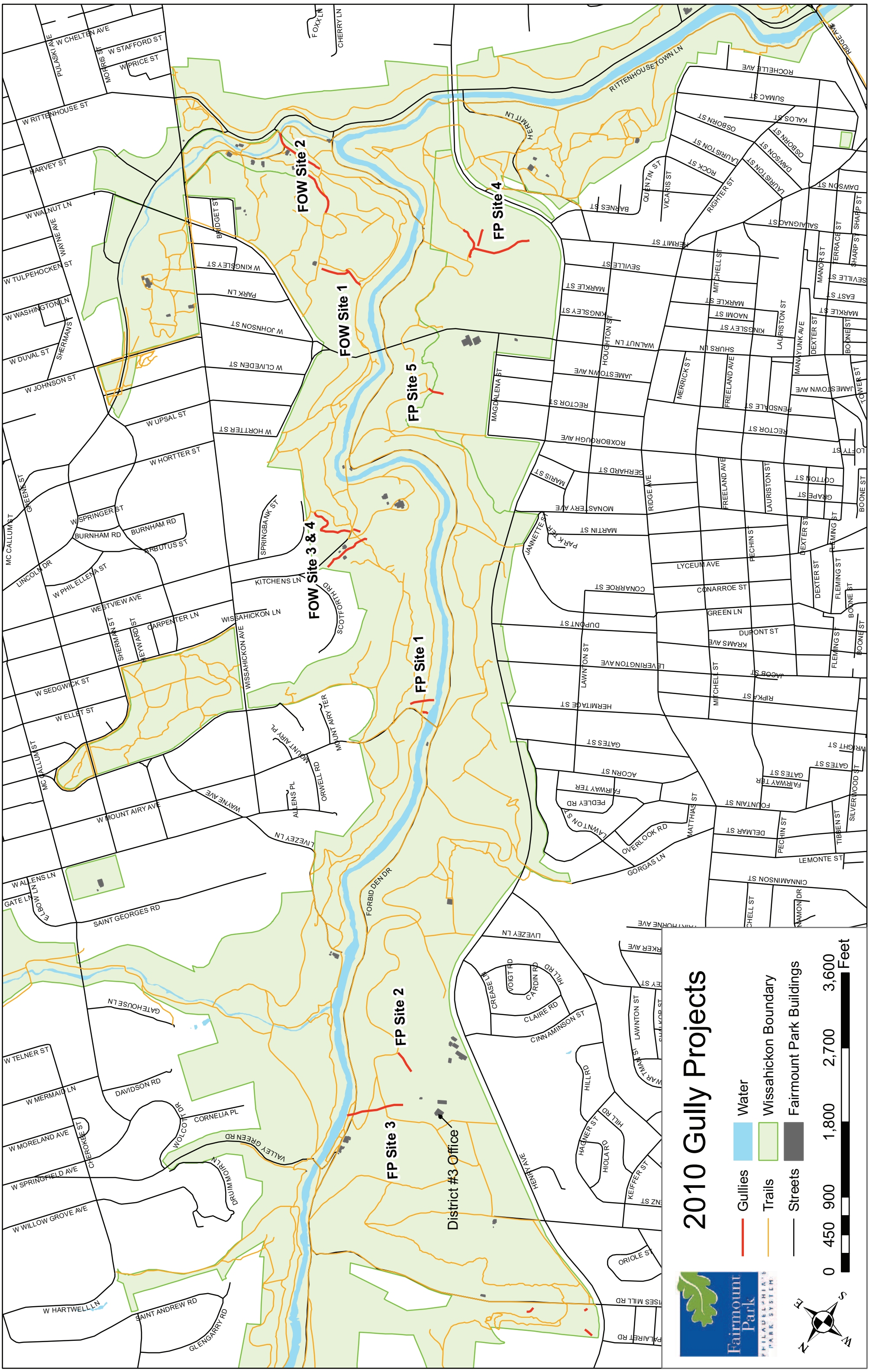



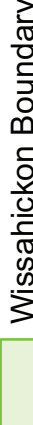

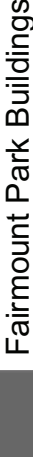
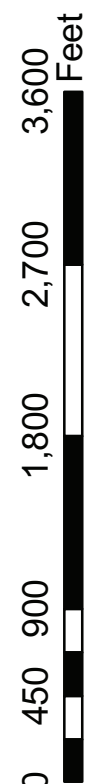


APPENDIX E
FRIENDS OF WISSAHICKON GULLY REPAIR PROJECTS



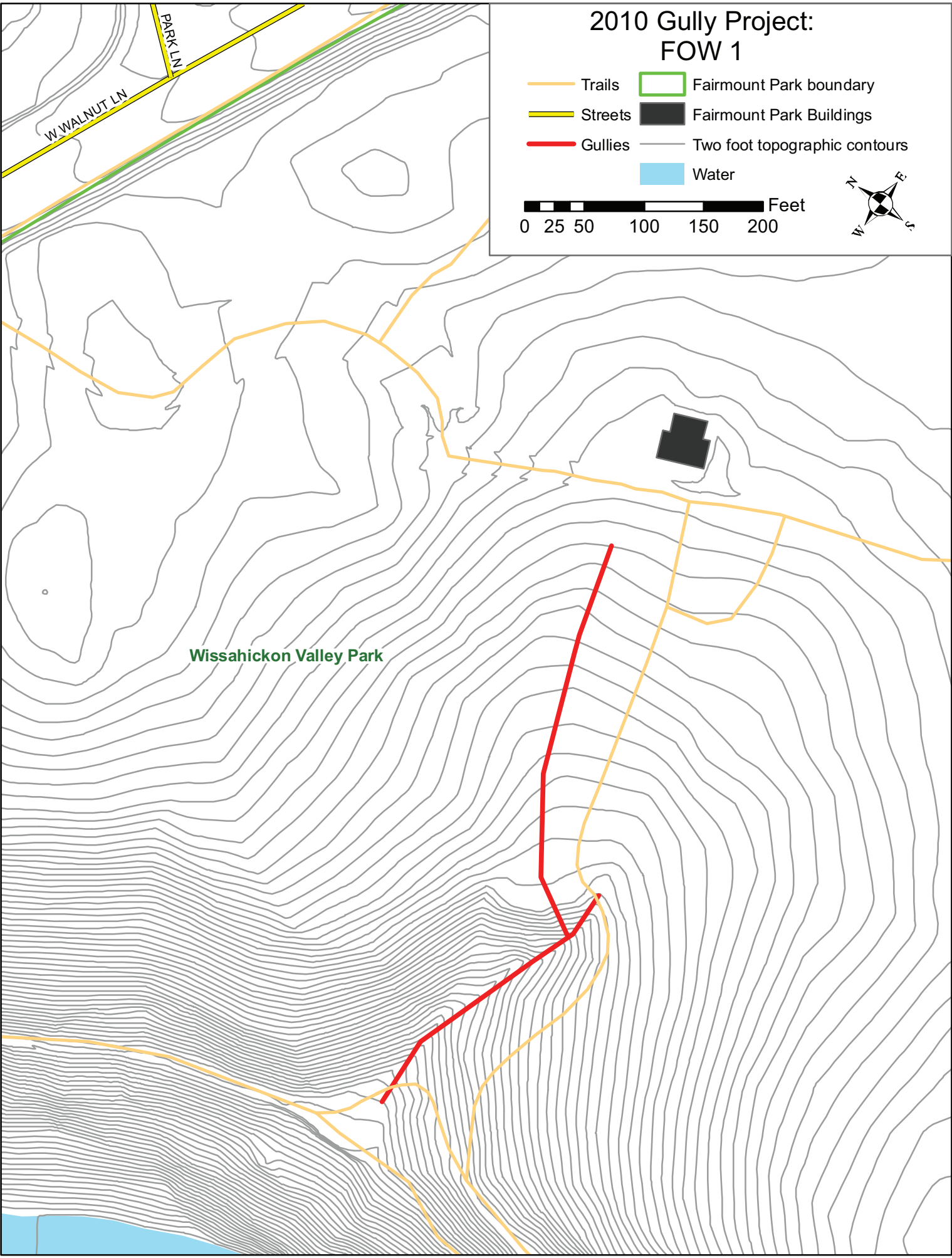
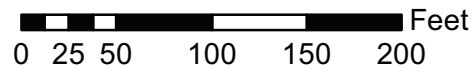
2010 Gully Projects

-  Gullies
-  Water
-  Trails
-  Wissahickon Boundary
-  Streets
-  Fairmount Park Buildings








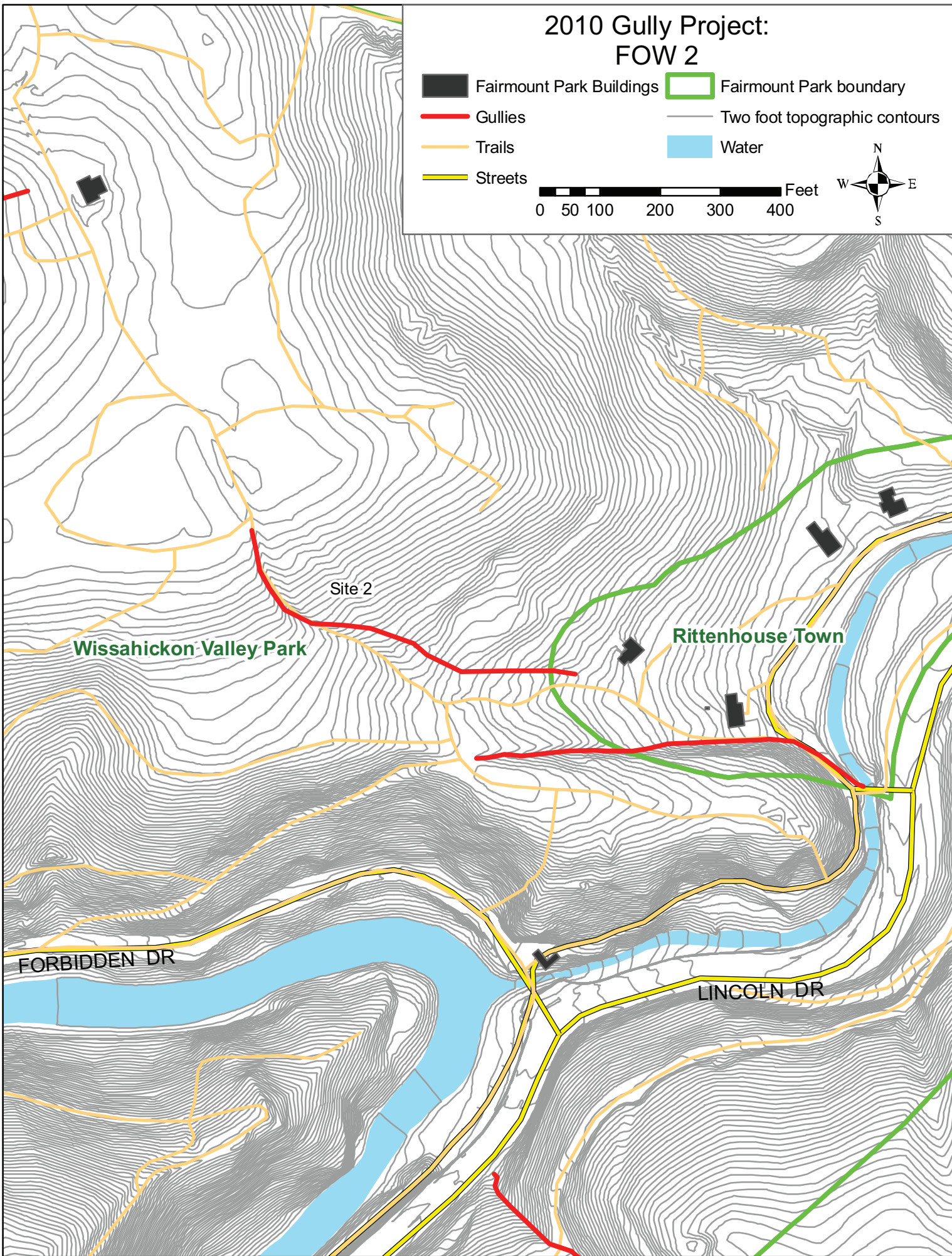
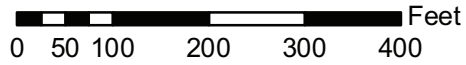
2010 Gully Project: FOW 1

- Trails
- Streets
- Gullies
- Fairmount Park boundary
- Fairmount Park Buildings
- Two foot topographic contours
- Water



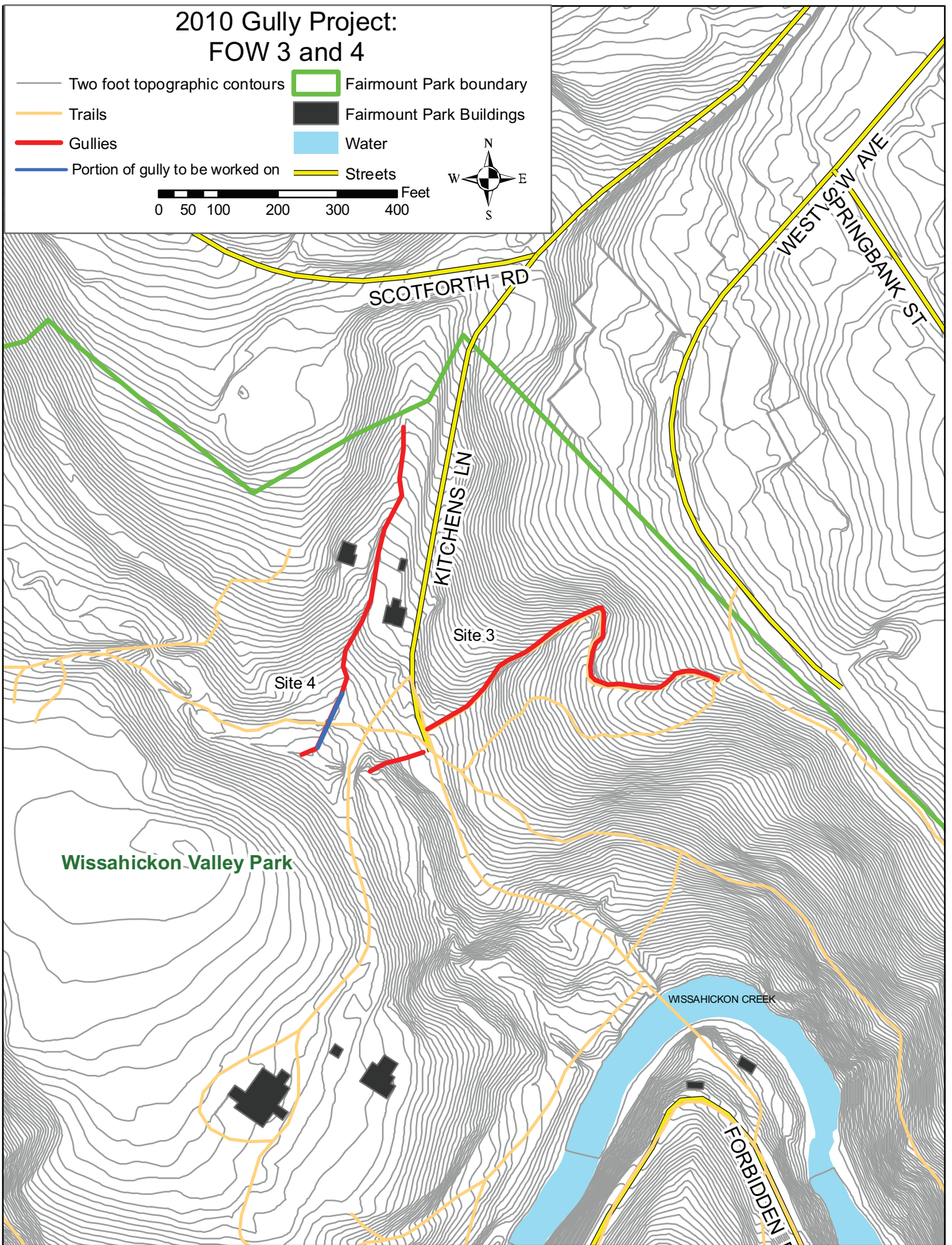
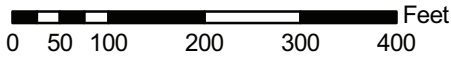
2010 Gully Project: FOW 2

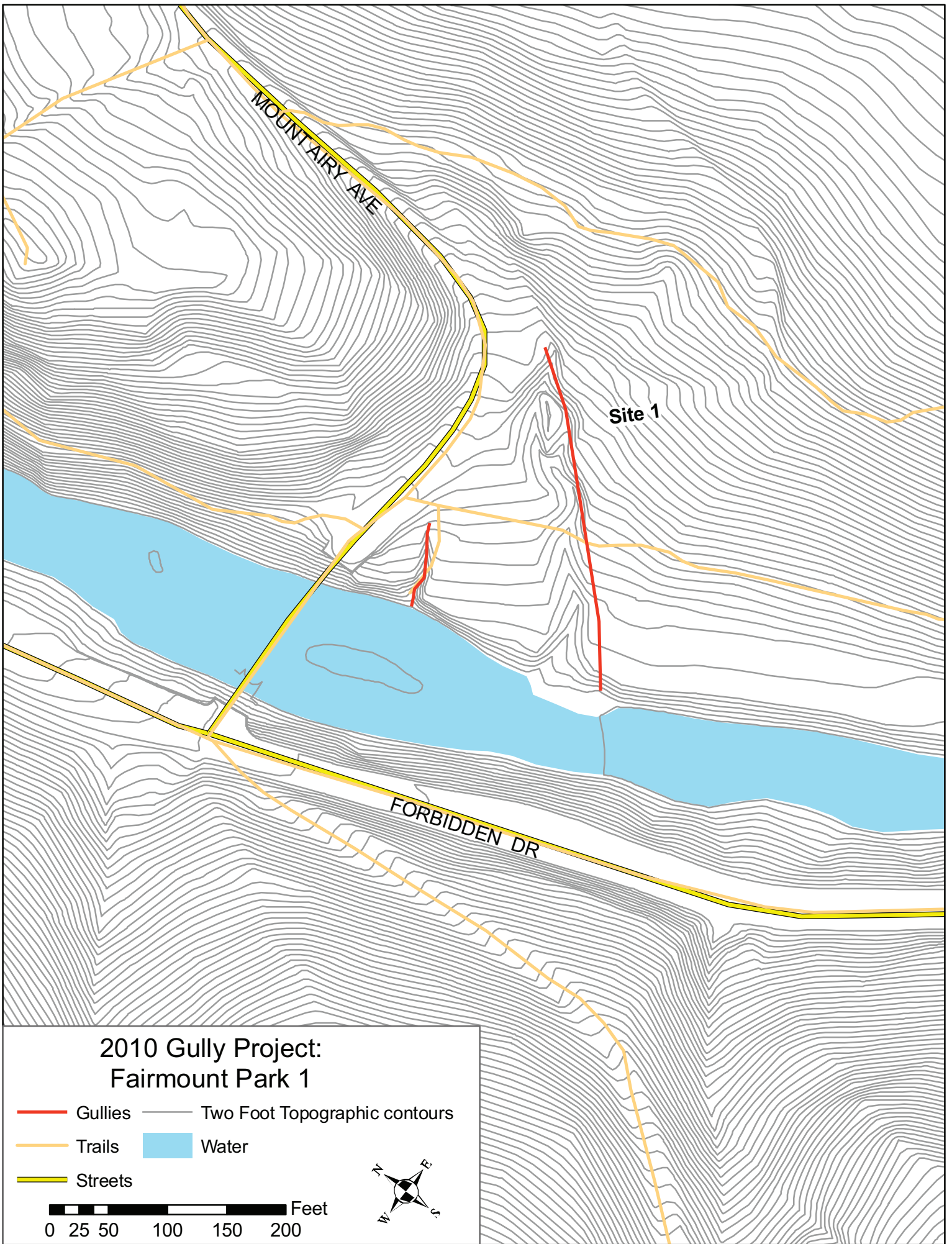
-  Fairmount Park Buildings
-  Fairmount Park boundary
-  Gullies
-  Two foot topographic contours
-  Trails
-  Water
-  Streets

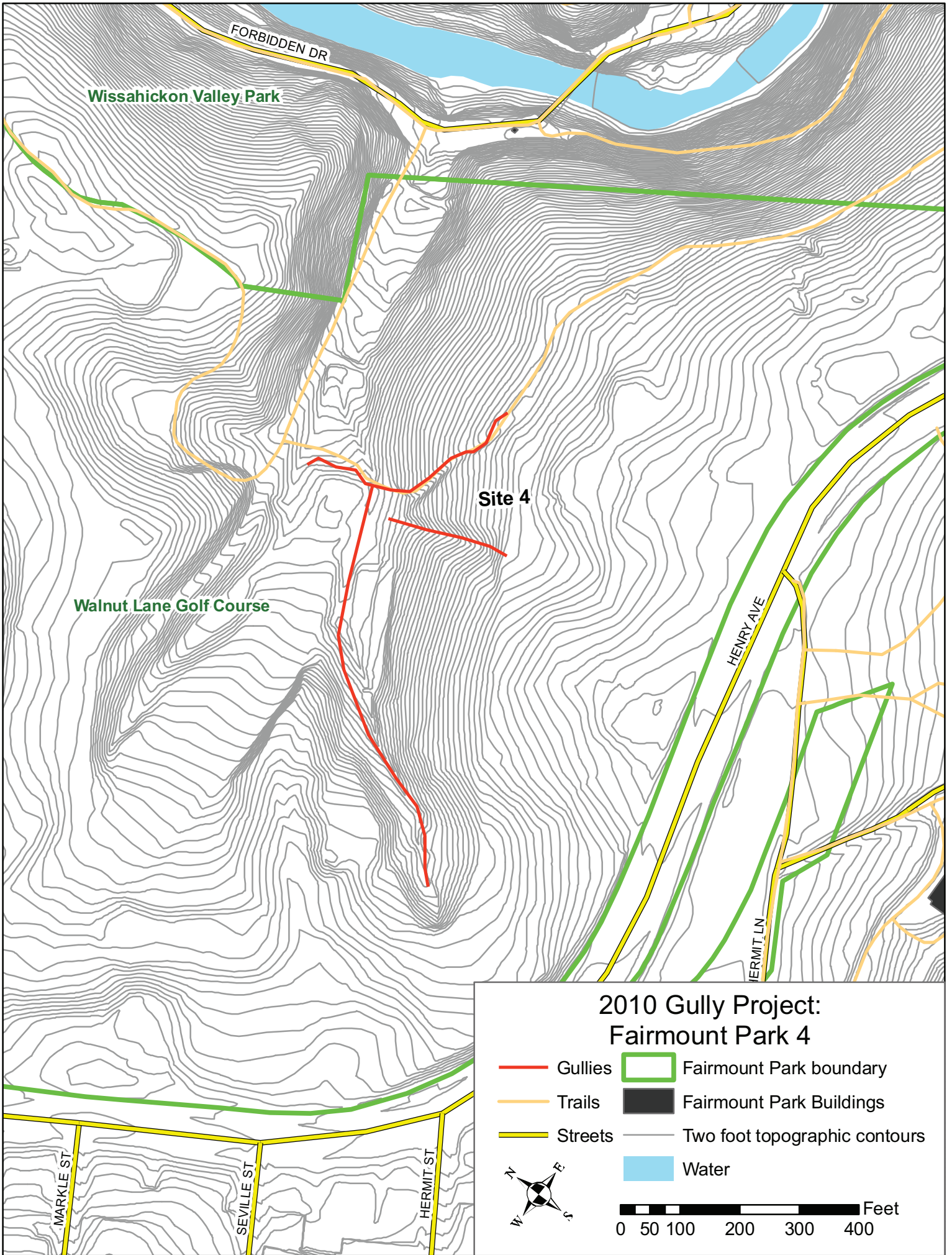


2010 Gully Project: FOW 3 and 4

- Two foot topographic contours
- Trails
- Gullies
- Portion of gully to be worked on
- Fairmount Park boundary
- Fairmount Park Buildings
- Water
- Streets







FORBIDDEN DR

Wissahickon Valley Park

Site 4

Walnut Lane Golf Course

HENRY AVE








HERMIT LN

MARKLE ST

SEVILLE ST

HERMIT ST

2010 Gully Project: Fairmount Park 5

	Fairmount Park boundary		Gullies
	Fairmount Park Buildings		Trails
	Two foot topographic contours		Streets
	Water		

0 25 50 100 150 200 Feet

